

ขั้นตอนการติดตั้ง SLL VPN Client

Windows 7 or higher supported

 [Download](#)

FortiClient VPN

The VPN-only version of FortiClient offers SSL VPN and IPsecVPN, but does not include any support. Download the best VPN software for multiple devices.

Remote Access

✓ SSL VPN with MFA

✓ IPSEC VPN with MFA



Download VPN for Windows

DOWNLOAD

3



Download VPN for MacOS

DOWNLOAD



Download VPN for Linux

DOWNLOAD .rpm



Download VPN for iOS

DOWNLOAD



Download VPN for Android

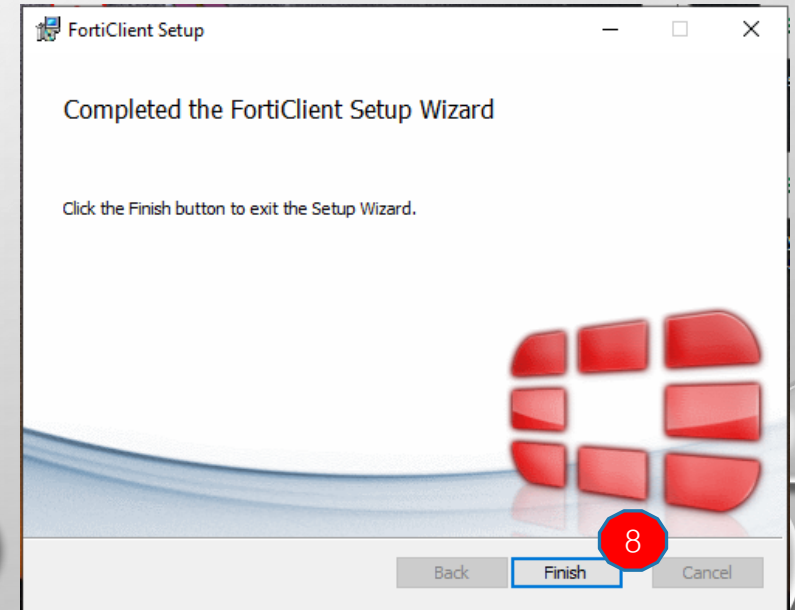
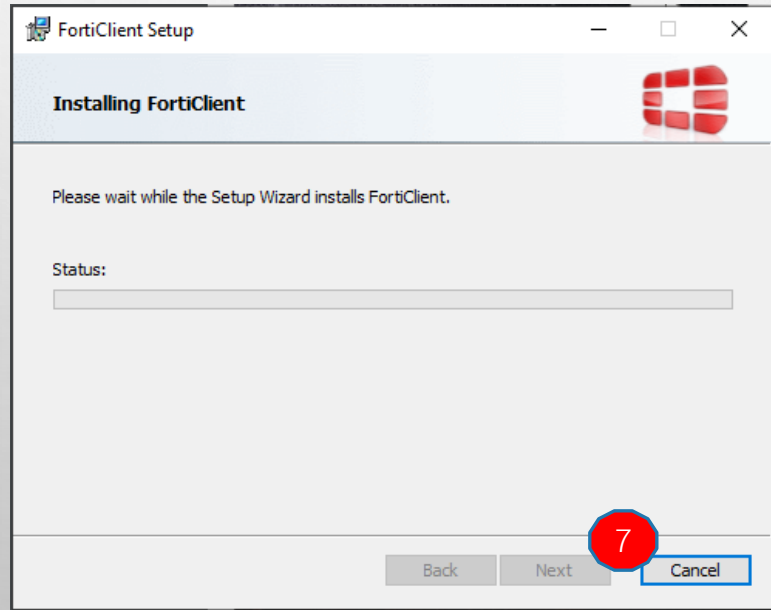
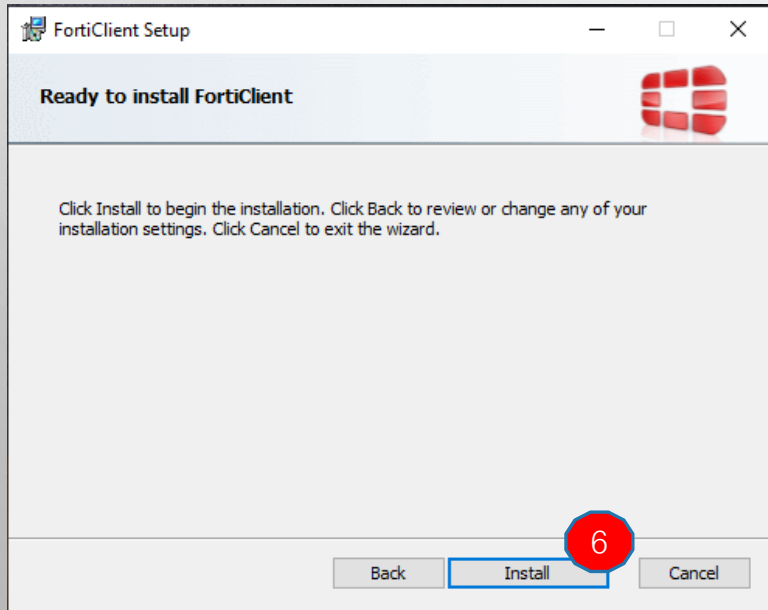
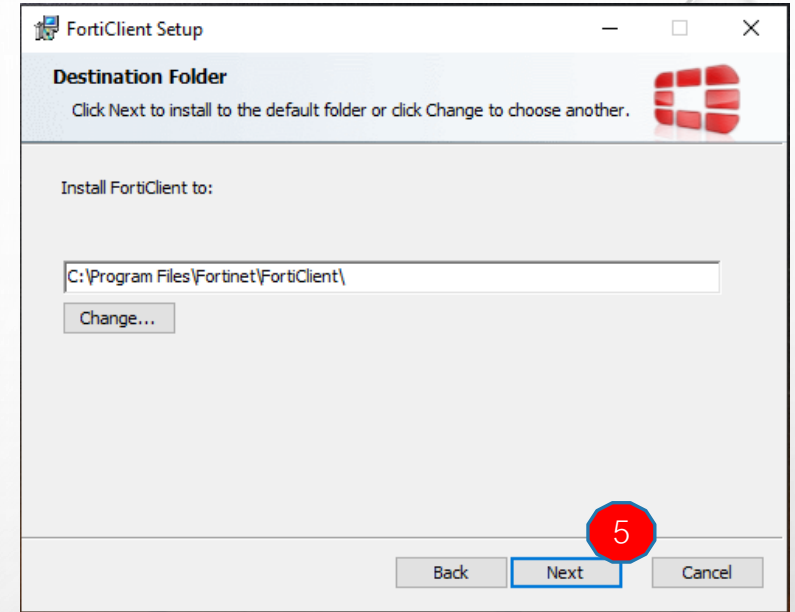
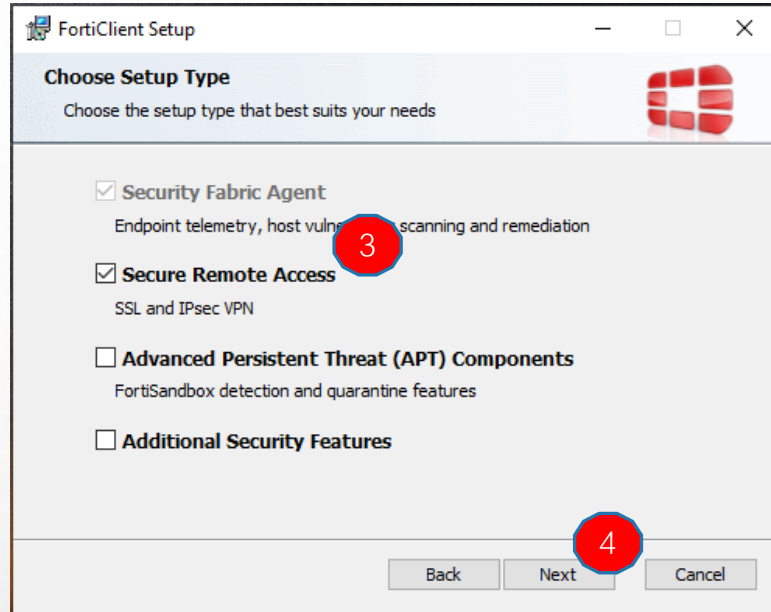
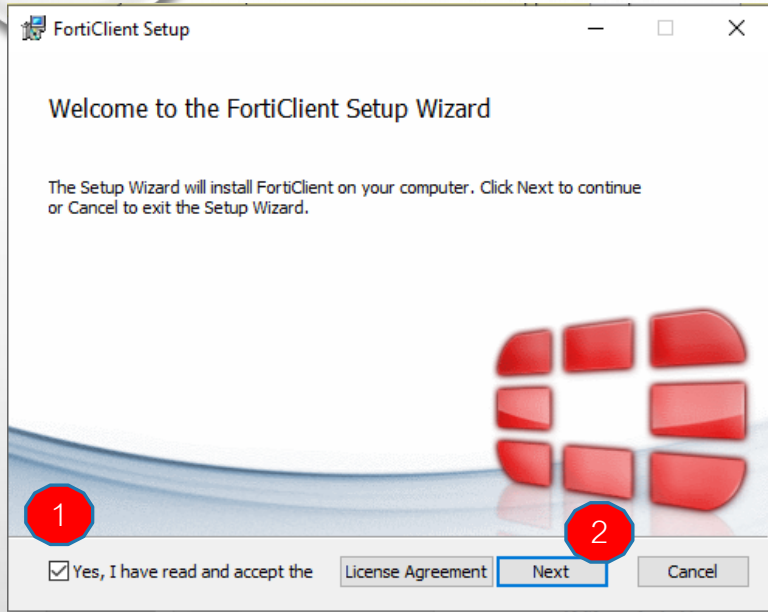
DOWNLOAD



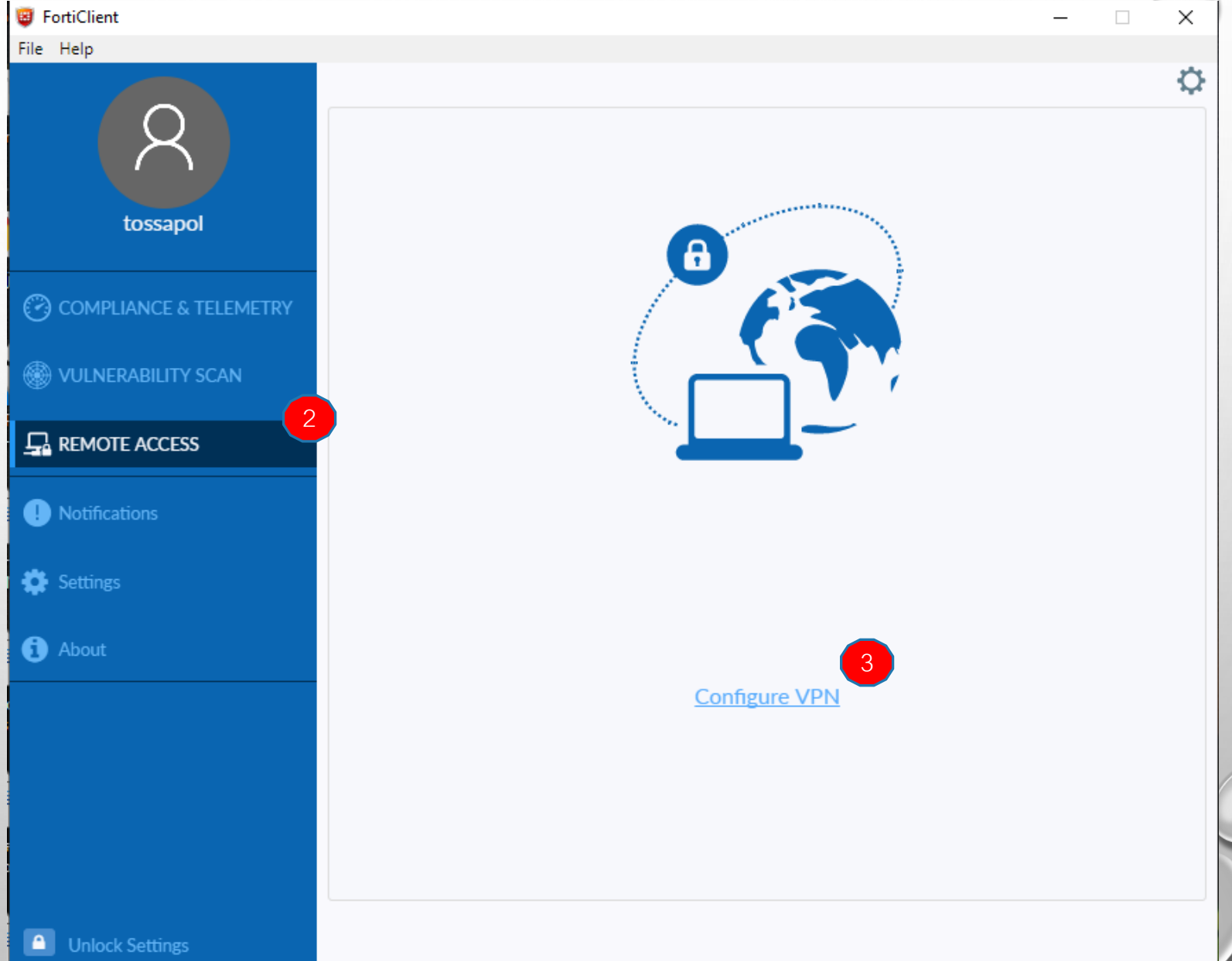
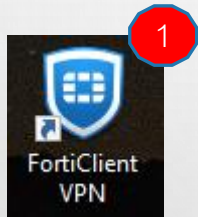
Download VPN for Linux

DOWNLOAD .deb

ขั้นตอนการติดตั้ง



ขั้นตอนการตั้งค่า



FortiClient
File Help

FortiClient VPN

Upgrade to the full version to access additional features and receive technical support.

Edit VPN Connection

VPN: **SSL-VPN** | IPsec VPN | XML

4

Connection Name: HCU-SSL-VPN

Description: HCU-SSL-VPN

Remote Gateway: 122.154.3.253 ✕
+Add Remote Gateway

Customize port: 10443

Enable Single Sign On (SSO) for VPN Tunnel

Client Certificate: None

Authentication: Prompt on login Save login

Username: _____

Enable Dual-stack IPv4/IPv6 address

5

Cancel Save

Remote Gateway : 122.154.3.253
Customize port : 10443

ขั้นตอนการตั้งค่า (ต่อ)

ใส่ Username และ Password สำหรับเข้าใช้
wifi มหาลัย หลังจากนั้นคลิก Connect

VPN Name	HCU-SSL-VPN
Username	tossapol.sil
Password

Connect

6

VPN Connected



VPN Name HCU-SSL-VPN
IP Address 192.168.100.21
Username tossapol.sil
Duration 00:00:15
Bytes Received 76.22 KB
Bytes Sent 97.66 KB

Disconnect

Security Alert



This page requires a secure connection which includes server authentication.

The Certificate Issuer for this site is untrusted or unknown. Do you wish to proceed?

Yes

No

View Certificate

More Info

7